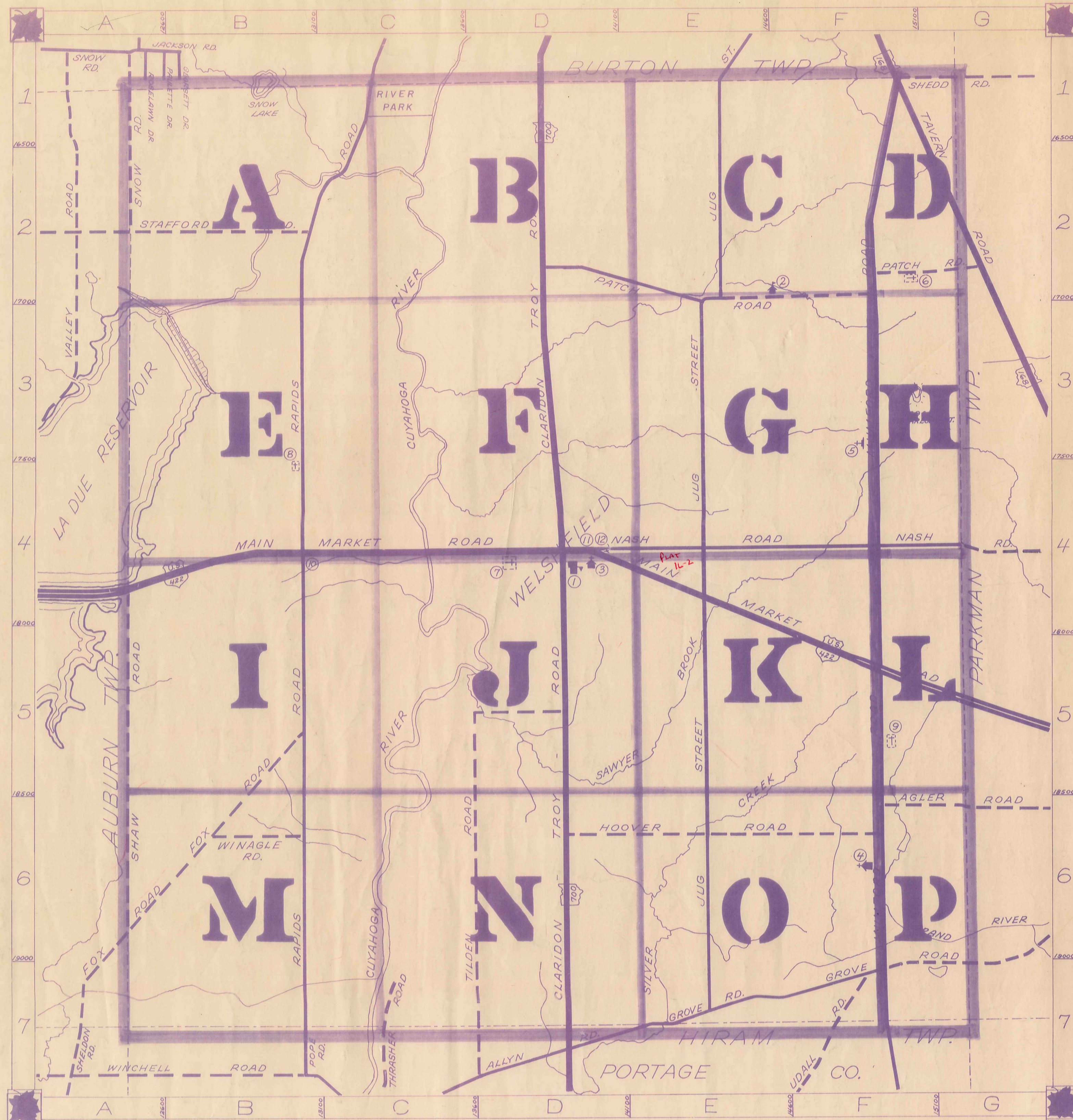


# ROAD INDEX



1	A	AGLER RD. F6-G6	J cont.	S cont.
			K	
2	B			T THRASHER RD. C7 TILDEN RD. D5-D7 TAVERN RD. F1-G3
			L	
3	C	CLARIDON TROY RD. DI-D7		
			M	
4	D			U DALL RD. F7
			N	
5	E			V NASH RD. D4-G4
			O	
6	F	FOX RD. A7-B5		W WINAGLE RD. B6
			P	
7	G	GROVE RD. E7-G6		X PATCH RD. D2-G2
			Q	
8	H			Y HOOVER RD. D6-F6
			R	
9	I			Z RAPIDS RD. C1-B7
			S	
10	J	JUG ST. E1-E7		
11	K			
12	L			
13	M			
14	N			
15	O			
16	P			

- ① TROY ELEMENTARY SCHOOL
- ② AMISH SCHOOL
- ③ TROY CONGREGATIONAL CH.
- ④ TROY BAPTIST CHURCH
- ⑤ SHRINE OF OUR LADY OF MARIAPOCH
- ⑥ BURROUGHS' CEMETERY
- ⑦ TROY CEMETERY
- ⑧ PATCH CEMETERY
- ⑨ MUMFORD CEMETERY
- ⑩ POPE HOME
- ⑪ TROY COMMUNITY HOUSE
- ⑫ TROY VOL. FIRE DEPT.

## TROY TOWNSHIP

SCALE: 1"=2000'  
 ROBERT L. PHILLIPS,  
 GEauga COUNTY ENGINEER

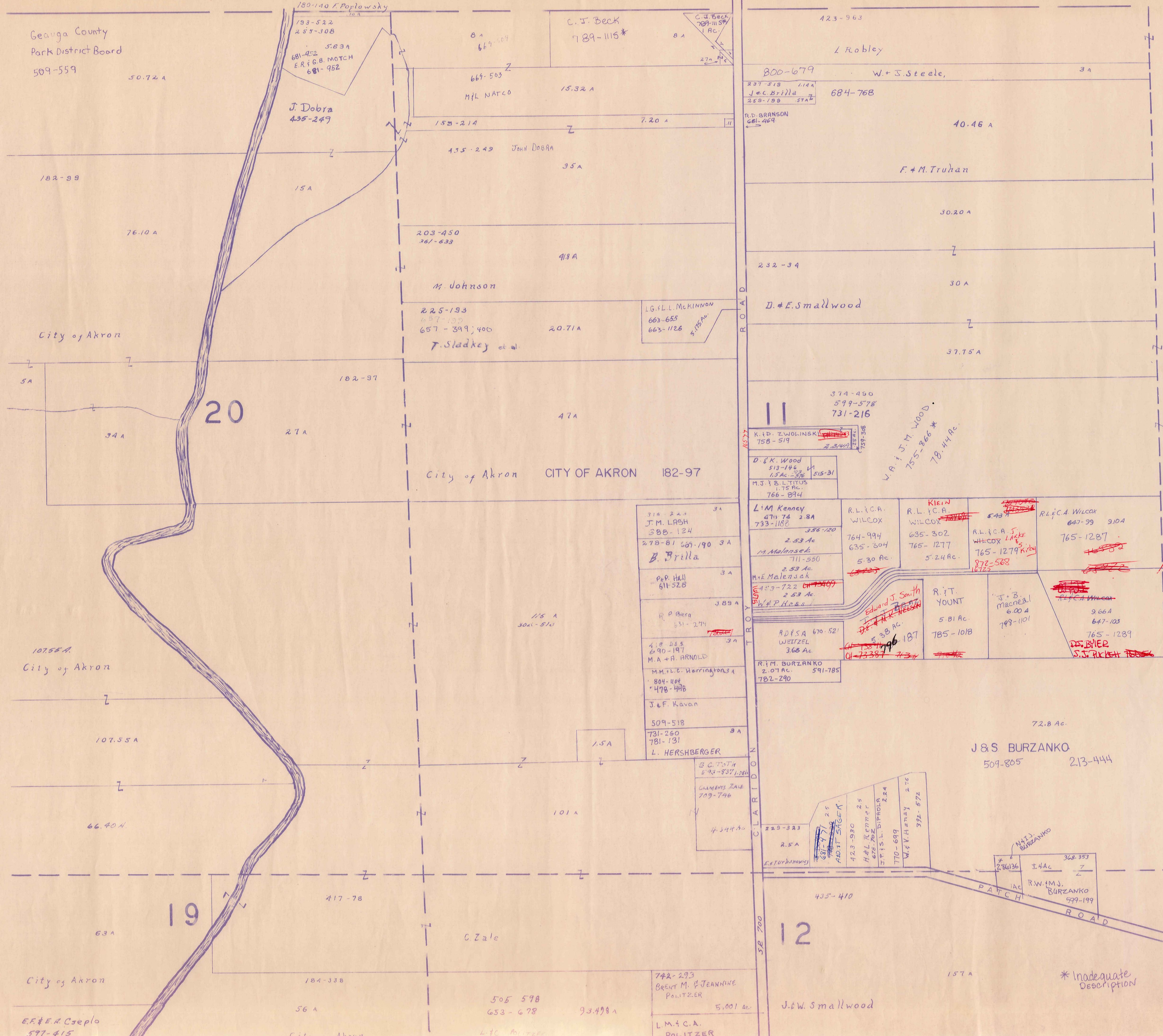
--- UNPAVED ROADS  
 --- TOWNSHIP LINE  
 --- PAVED ROADS  
 --- COUNTY LINE

*done 5-12-93*



BURTON

TOWNSHIP



Geauga County  
Park District Board  
509-559

182-99

76.10 A

City of Akron

5A

107.55 A  
City of Akron

107.55 A

66.40 A

City of Akron

E.F. & E.R. Csepla  
597-415  
598

180-140 F. Poplawsky  
153-522  
255-308  
5.83 A  
681-452  
E.R. G.B. MATCH  
681-952

J. Dobra  
435-249

15 A

City of Akron

182-97

27 A

107.55 A  
City of Akron

107.55 A

66.40 A

City of Akron

E.F. & E.R. Csepla  
597-415  
598

6 A  
667-503  
M.H. NATCO

15.32 A

1525-214

4.35-249 JOHN DOBRA

35 A

203-450  
361-633

M. Johnson

2.25-153  
657-133  
657-399; 400

T. Sladkey et al.

182-97

47 A

City of Akron

CITY OF AKRON 182-97

1/5 A  
3021-512

107.55 A  
City of Akron

107.55 A

66.40 A

City of Akron

E.F. & E.R. Csepla  
597-415  
598

C. J. Beck  
789-1115\*

15.32 A

1525-214

4.35-249 JOHN DOBRA

35 A

203-450  
361-633

M. Johnson

2.25-153  
657-133  
657-399; 400

T. Sladkey et al.

182-97

47 A

City of Akron

CITY OF AKRON 182-97

1/5 A  
3021-512

107.55 A  
City of Akron

107.55 A

66.40 A

City of Akron

E.F. & E.R. Csepla  
597-415  
598

C. J. Beck  
789-1115\*

15.32 A

1525-214

4.35-249 JOHN DOBRA

35 A

203-450  
361-633

M. Johnson

2.25-153  
657-133  
657-399; 400

T. Sladkey et al.

182-97

47 A

City of Akron

CITY OF AKRON 182-97

1/5 A  
3021-512

107.55 A  
City of Akron

107.55 A

66.40 A

City of Akron

E.F. & E.R. Csepla  
597-415  
598

L. Robley

800-679

W. S. Steele,

684-768

40.46 A

R.D. BRANSON  
CEL-469

F. M. Truhan

30.20 A

232-34

30 A

D. E. Smallwood

37.75 A

374-450  
599-578  
731-216

R. D. ZWOLINSKI  
758-519

D. E. K. Wood  
513-184  
1.5 Ac.

M. J. B. LITVUS  
1.75 Ac.  
766-894

L. M. Kenney  
479-74  
28A  
733-1182

R. L. C. A. WILCOX  
764-994  
635-304  
5.30 Ac.

R. L. C. A. WILCOX  
635-302  
765-1277  
5.24 Ac.

R. L. C. A. WILCOX  
647-99  
310A  
765-1287

M. Malensek  
711-550  
2.53 Ac.

M. E. Malensek  
711-550  
2.53 Ac.

R. P. Berg  
531-274

J. B. Macneil  
600 A  
799-1101

R. J. T. YOUNT  
5.81 Ac.  
785-1018

J. & S. BURZANKO  
509-805  
213-444

R. J. T. YOUNT  
5.81 Ac.  
785-1018

R. J. T. YOUNT  
5.81 Ac.  
785-1018

R. J. T. YOUNT  
5.81 Ac.  
785-1018

R. J. T. YOUNT  
5.81 Ac.  
785-1018

R. J. T. YOUNT  
5.81 Ac.  
785-1018

423-963

800-679

W. S. Steele,

684-768

40.46 A

R.D. BRANSON  
CEL-469

F. M. Truhan

30.20 A

232-34

30 A

D. E. Smallwood

37.75 A

374-450  
599-578  
731-216

R. D. ZWOLINSKI  
758-519

D. E. K. Wood  
513-184  
1.5 Ac.

M. J. B. LITVUS  
1.75 Ac.  
766-894

L. M. Kenney  
479-74  
28A  
733-1182

R. L. C. A. WILCOX  
764-994  
635-304  
5.30 Ac.

R. L. C. A. WILCOX  
635-302  
765-1277  
5.24 Ac.

R. L. C. A. WILCOX  
647-99  
310A  
765-1287

M. Malensek  
711-550  
2.53 Ac.

M. E. Malensek  
711-550  
2.53 Ac.

R. P. Berg  
531-274

J. B. Macneil  
600 A  
799-1101

R. J. T. YOUNT  
5.81 Ac.  
785-1018

J. & S. BURZANKO  
509-805  
213-444

R. J. T. YOUNT  
5.81 Ac.  
785-1018

R. J. T. YOUNT  
5.81 Ac.  
785-1018

R. J. T. YOUNT  
5.81 Ac.  
785-1018

R. J. T. YOUNT  
5.81 Ac.  
785-1018

R. J. T. YOUNT  
5.81 Ac.  
785-1018

Silver Fox  
Subd  
VIXON DE



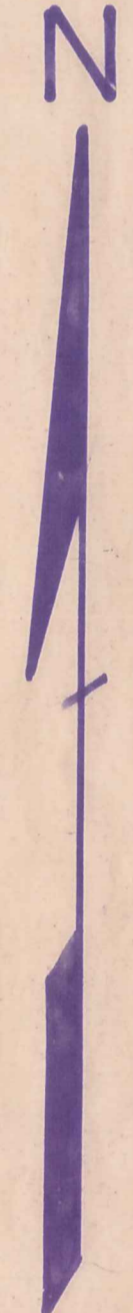
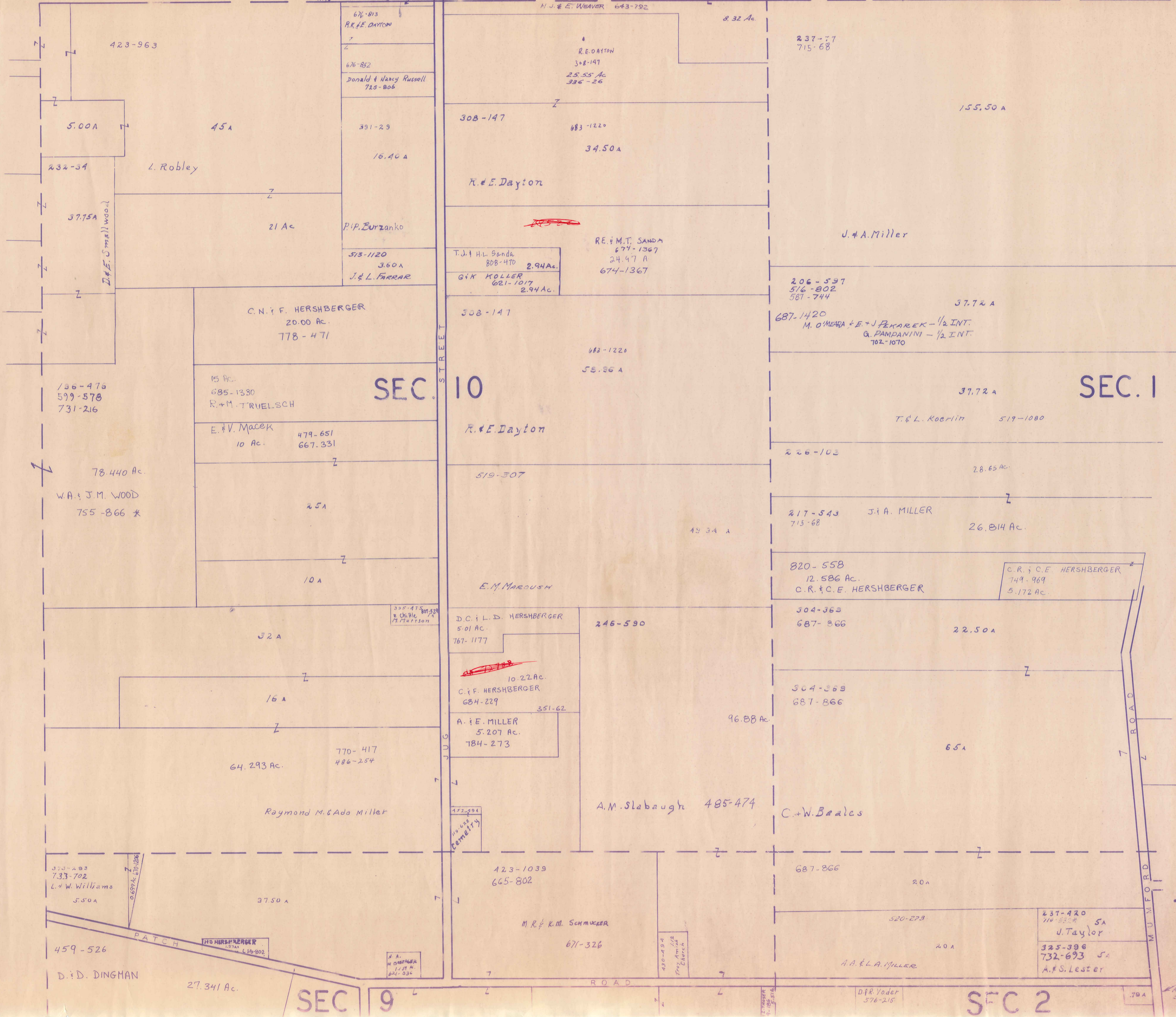
SCALE 1"=300'

JANUARY 1, 1989  
RELATIVE REPRESENTATION

A	B	C	D
E	F	G	H
I	J	K	L
M	N	O	P

TROY TWB

BURTON TOWNSHIP



SCALE 1" = 300'

JAN. 1, 1989

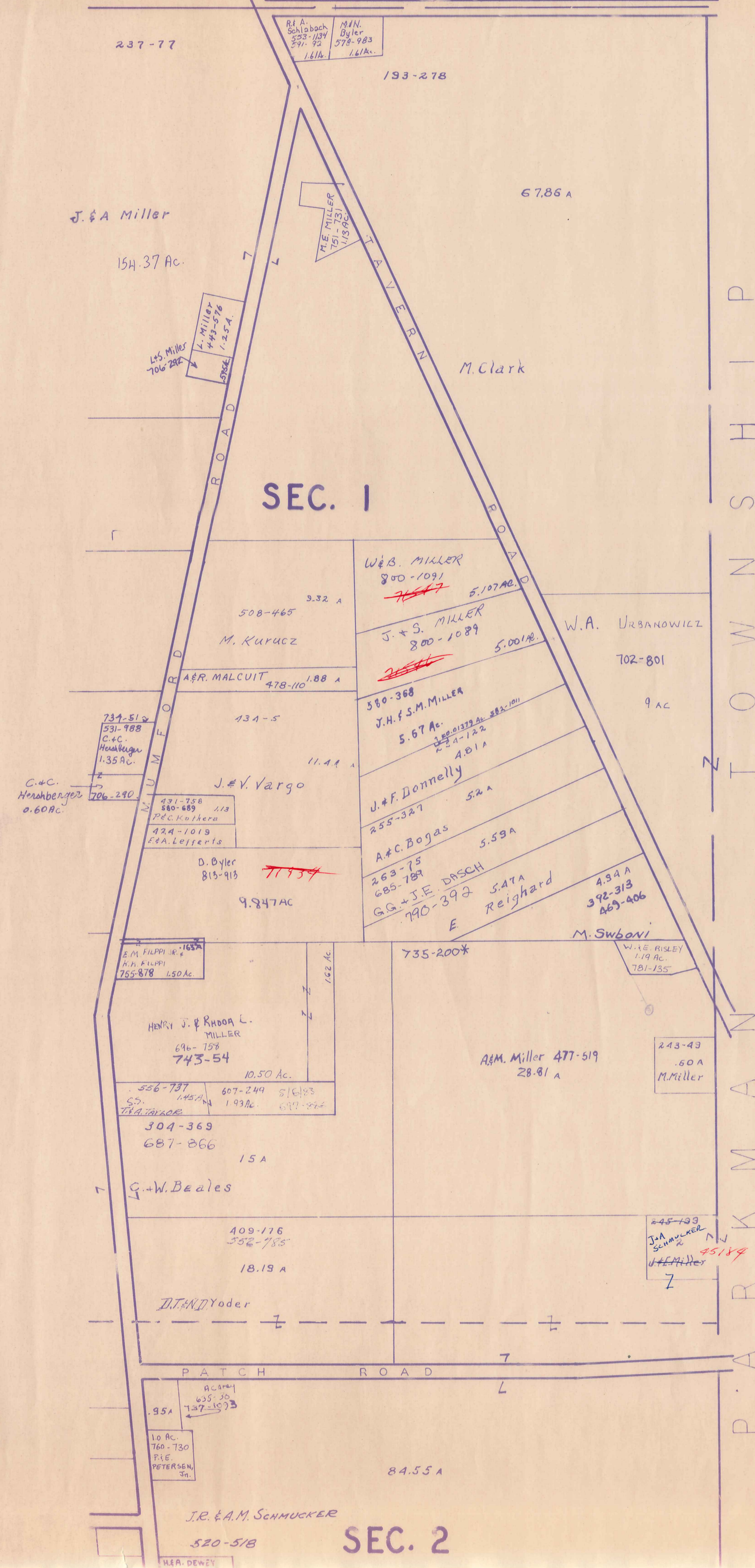
A	B	C	D
E	F	G	H
I	J	K	L
M	N	O	P

TROY TWP

RELATIVE REPRESENTATION  
\* Inadequate Description

K.P. Deary  
550-746

BURTON TOWNSHIP



P A R K E C O U N T Y I N D I A N A



SCALE 1" = 300'

JANUARY 1, 1989  
RELATIVE REPRESENTATION

\*Inadequate Description

A	B	C	D
E	F	G	H
I	J	K	L
M	N	O	P

TROY TWP





27.341 Ac. D. & D. DINGMAN  
 732-1303 459-526  
 K. & S. FURLONG 568-516  
 3.662 Ac  
 732-1305 596-600-603 12.600 A.  
 K.G. & S.W. FURLONG  
 254-227  
 4.68A  
 732-1301 568-318  
 K.G. & S.W. FURLONG

423-1039 37.50 A  
 M.R. & K.M. SCHMUCKER  
 671-326  
 36 A  
 F.A. & E.A. MILLER  
 673-175  
 5 AC.  
 M.I. TROYER  
 809-186  
 5.51 Ac.

232-175  
 390-174  
 64 A  
 R. & E. Schmucker  
 597-227  
 18.94 A  
 817-106  
 671-532  
 730-54  
 J. M. SLEPKO  
 1700

40.50 A  
 682-581  
 A. & L. Miller  
 299-226  
**SEC. 9**  
 55.25 A  
 681-1252  
 J. & A. Miller  
 A. & V. KORPOWSKI  
 710-1273\* 10 Ac.  
 R. & L. HANCOCK  
 621-314 10 Ac.  
 2.25 Ac.  
 3.50 A  
 F. & K. Hancock  
 711-1211  
 17 A  
 L. Mayeros 718-912 3.75  
 718-232, 841  
 3.33 Ac.  
 A. J. MILLER  
 773-961 728-272  
 229-120 3A 609-162  
 M. Gardner  
 229-498  
 734-1285\*  
 20.71 Ac

36.30 A  
 A. L. MILLER  
 682-581  
 244-590  
 28.49 Ac.  
 485-474  
 A. M. SLABAUGH  
 731-1164  
 F. N. & E. A. GINGERICH  
 44.50 A  
 M. PRICE  
 36.79 Ac.  
 661-1203

91.82 ac.  
**SEC. 2**  
 J. M. Slepko  
 601-862  
 T. & K. KOLINSKY  
 696-1051 685-381  
 35.63 Ac.  
 685-379  
 T. & K. KOLINSKY  
 696-1051 685-381  
 35.63 Ac.  
 J. Kolinsky  
 & Virginia E  
 2 Ac  
 732-353  
 361-604

76.25 A  
 J.R. & E.S. SCHMUCKER  
 769-1070  
 259-452  
 67.50 A  
**SEC. 8**  
 O. & F. Love  
 J.R. & G. Love  
 647-74 3.15 A  
 513-87  
 290-50  
 E. & G. Love  
 1 A.  
 667-800  
 689-755 3.72 Ac.  
 E. A. & G. L. LOVE  
 D. & D. HULL  
 4.0 Ac.  
 810-309  
 754-506  
 331-195 4.0 Ac.  
 E. KIMPTON  
 4 Ac.  
 R. & C. WILLS  
 451-37  
 A. L. TRACY  
 538-96  
 696-570  
 265-34.36  
 661-247  
 Roy E.  
 JOHNSON  
 585-983  
 R. JOHNSON  
 3.7002  
 12.612 A.  
 H. Wascah  
 T. & C. VANDERMAAS  
 777-746

H. MAISTROS  
 D. MAISTROS  
 D. DILLON  
 D. J. KALMBAUGH  
 576-426  
 26.25 Ac.  
 661-456  
 714-944  
 3 Ac.  
 D. SzySLA  
 and  
 C. DeBord  
 806-1017  
 796-540  
 B. & J.  
 McMURRAY  
 H. G. Wheeler  
 H. E. Maistros Wheeler  
 29.46 Ac

46.25 A  
 A. Patalki et al.  
 818-177  
 35.63 Ac.  
 46.25 A  
 A. Patalki et al.

667-800  
 689-755 3.72 Ac.  
 E. A. & G. L. LOVE  
 D. & D. HULL  
 4.0 Ac.  
 810-309  
 754-506  
 331-195 4.0 Ac.  
 E. KIMPTON  
 4 Ac.  
 R. & C. WILLS  
 451-37  
 A. L. TRACY  
 538-96  
 696-570  
 265-34.36  
 661-247  
 Roy E.  
 JOHNSON  
 585-983  
 R. JOHNSON  
 3.7002  
 12.612 A.  
 591-1245  
 591-1205  
 E.S. & K.M. YODER  
 81.98 A  
 J. & A. TRACY  
 580-776  
 46.22 Ac.  
 NOW 30.3288 Ac (REMAINING)  
 671-978  
 1716 A  
 Roy Johnson  
 7200  
 Yoder  
 G. N. SANFORD  
 675-1114  
 2.5 Ac.  
 R. & E. DETWEILER  
 1 Ac.  
 625-772  
 459-652

508-867  
 20.73 A  
 S. Vedrody  
**SEC. 3**  
 91.20 Ac.  
 764-139  
 W.E. & D.S. DETWEILER, JR.  
 486-676  
 52.742 Ac.  
 I. KOVICS  
 753-285  
 J. & F. MILLER  
 783-1129  
 5.086 Ac.  
 553 Ac.

R O A D  
 M U N I C I P A L



SCALE 1"=300'

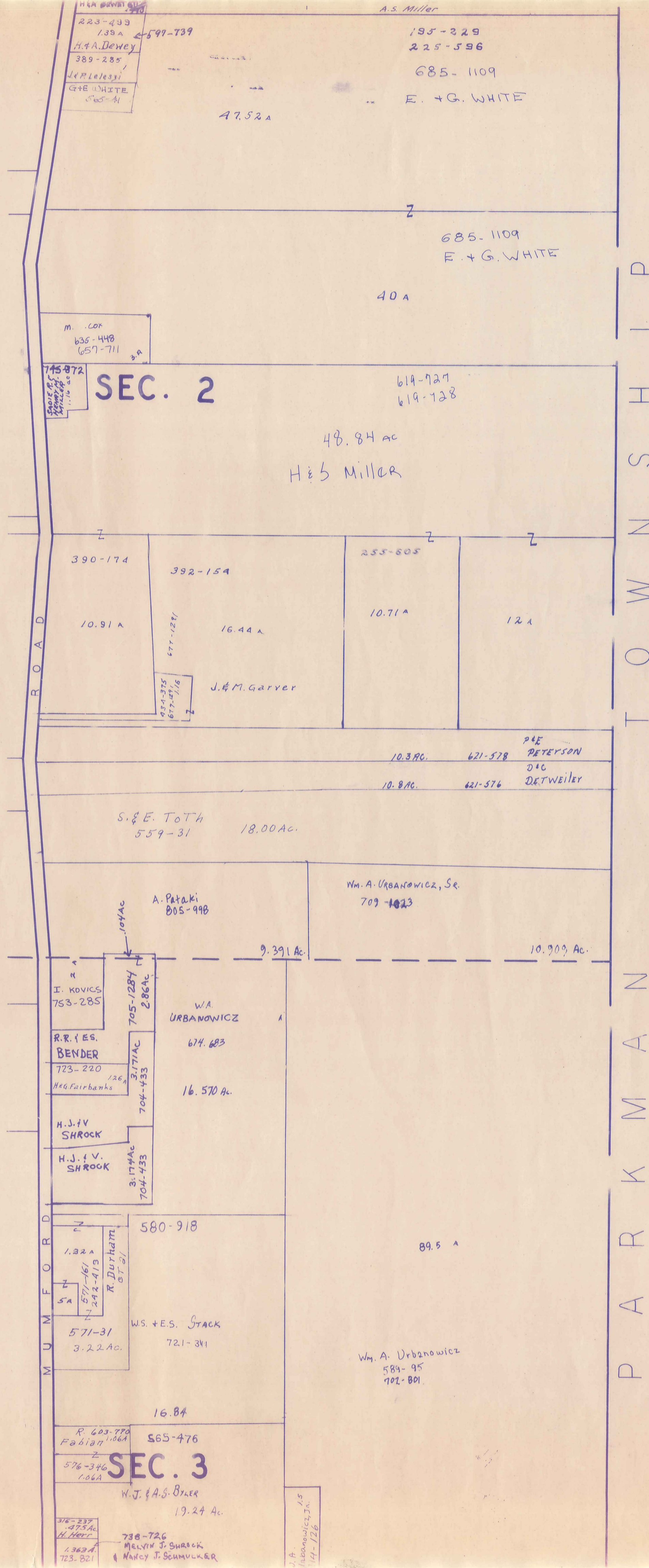
JAN. 1, 1989

A	B	C	D
E	F	G	H
I	J	K	L
M	N	O	P

TROY TWP.

RELATIVE REPRESENTATION

\* Inadequate Description



SCALE 1"=300'

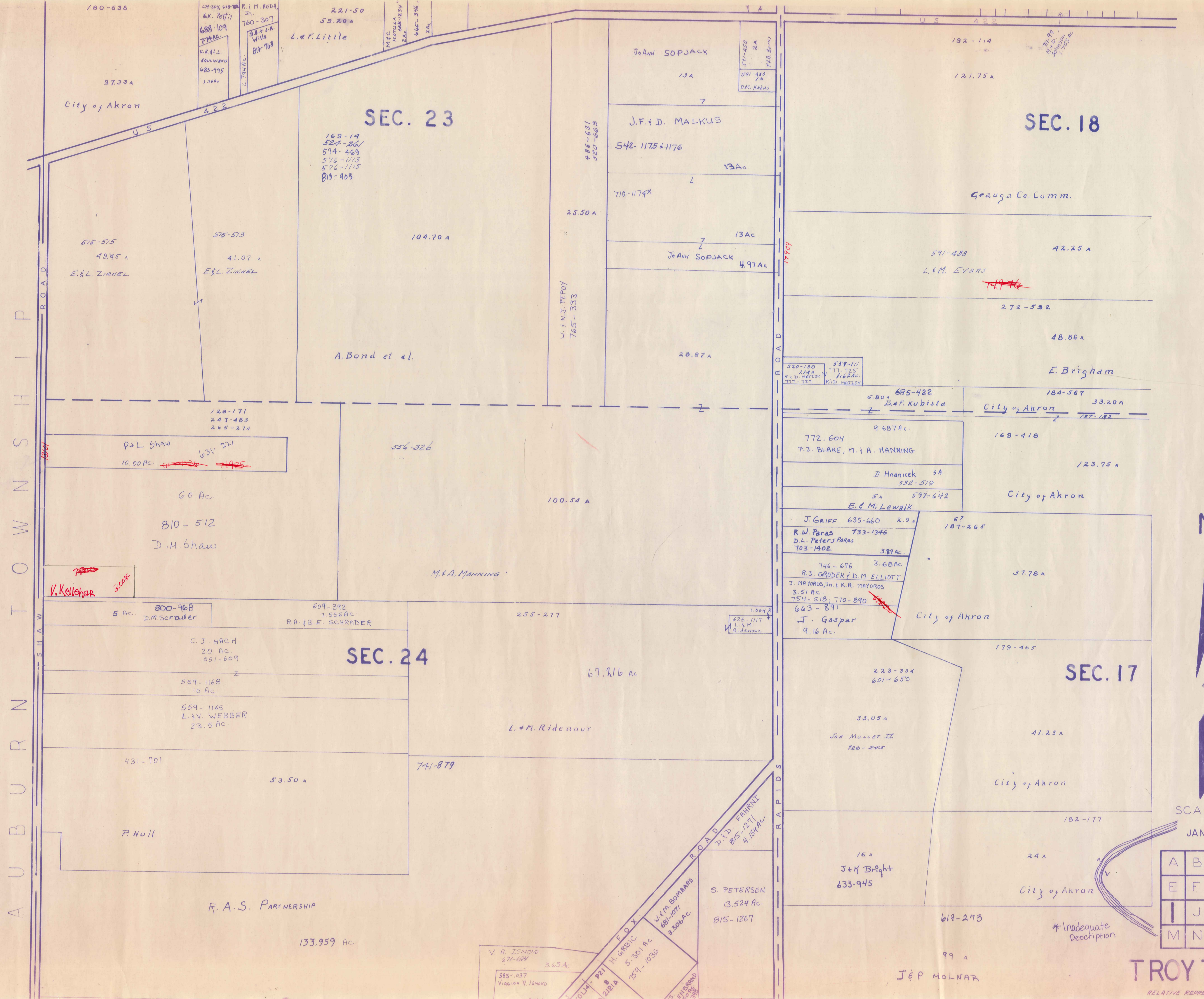
JAN. 1, 1989

A	B	C	D
E	F	G	H
I	J	K	L
M	N	O	P

**TROY TWP.**

RELATIVE REPRESENTATION

\*Inadequate Description



AUBURN TOWNSHIP

SHAW ROAD

RAPIDS ROAD

U S 4 2 2

U S 4 2 2

U S 4 2 2

U S 4 2 2

U S 4 2 2

U S 4 2 2

U S 4 2 2

U S 4 2 2

U S 4 2 2

U S 4 2 2

U S 4 2 2

U S 4 2 2

U S 4 2 2

U S 4 2 2

U S 4 2 2

U S 4 2 2

U S 4 2 2

U S 4 2 2

U S 4 2 2

U S 4 2 2

U S 4 2 2

U S 4 2 2

U S 4 2 2

U S 4 2 2

U S 4 2 2

U S 4 2 2

U S 4 2 2

U S 4 2 2

U S 4 2 2

U S 4 2 2

U S 4 2 2

U S 4 2 2

U S 4 2 2

U S 4 2 2

U S 4 2 2

U S 4 2 2

U S 4 2 2

U S 4 2 2

U S 4 2 2

U S 4 2 2

U S 4 2 2

U S 4 2 2

U S 4 2 2

U S 4 2 2

U S 4 2 2

City of Akron

E. & L. ZIRHEL

P. L. SHAW

V. Kelleher

D.M. Schrader

C. J. HACH

L. & V. WEBBER

P. Hull

R. A. S. PARTNERSHIP

V. R. ISMOND

VIRGINIA R. ISMOND

SEC. 23

A. Bond et al.

M. & A. MANNING

SEC. 24

L. & M. Ridenour

S. PETERSEN

W. & M. BOMBARD

H. GRUBIC

LENSGRAND

SEC. 18

JoAnn SOPJACK

J. F. & D. MALKUS

SEC. 17

City of Akron

J. Gaspar

J. & K. Bright

J. & P. MOLNAR

City of Akron

City of Akron

City of Akron

City of Akron

City of Akron

City of Akron

City of Akron

City of Akron

City of Akron

City of Akron

City of Akron

City of Akron

City of Akron

City of Akron

City of Akron

City of Akron

City of Akron

City of Akron

City of Akron

City of Akron

City of Akron

City of Akron

City of Akron

City of Akron

City of Akron

City of Akron

City of Akron

City of Akron

City of Akron

City of Akron

City of Akron

City of Akron

City of Akron

City of Akron

City of Akron

City of Akron

City of Akron

City of Akron

City of Akron

City of Akron

City of Akron

City of Akron

City of Akron

City of Akron

City of Akron

City of Akron

City of Akron

City of Akron

City of Akron

City of Akron

City of Akron

City of Akron

City of Akron

City of Akron

City of Akron

City of Akron

City of Akron

City of Akron

City of Akron

City of Akron

City of Akron

City of Akron

City of Akron

City of Akron

City of Akron

City of Akron

City of Akron

City of Akron

City of Akron

City of Akron

City of Akron

City of Akron

City of Akron

City of Akron

City of Akron

City of Akron

City of Akron

City of Akron

City of Akron

City of Akron

City of Akron

City of Akron

City of Akron

City of Akron

City of Akron

City of Akron

City of Akron

City of Akron

City of Akron

City of Akron

City of Akron

City of Akron

City of Akron

City of Akron

City of Akron

City of Akron

City of Akron

City of Akron

City of Akron

City of Akron

City of Akron

City of Akron

City of Akron

City of Akron

City of Akron

City of Akron

City of Akron

City of Akron

City of Akron

City of Akron

City of Akron

City of Akron

City of Akron

City of Akron

City of Akron

City of Akron

City of Akron

City of Akron

City of Akron

City of Akron

City of Akron

City of Akron

City of Akron

City of Akron

City of Akron

City of Akron



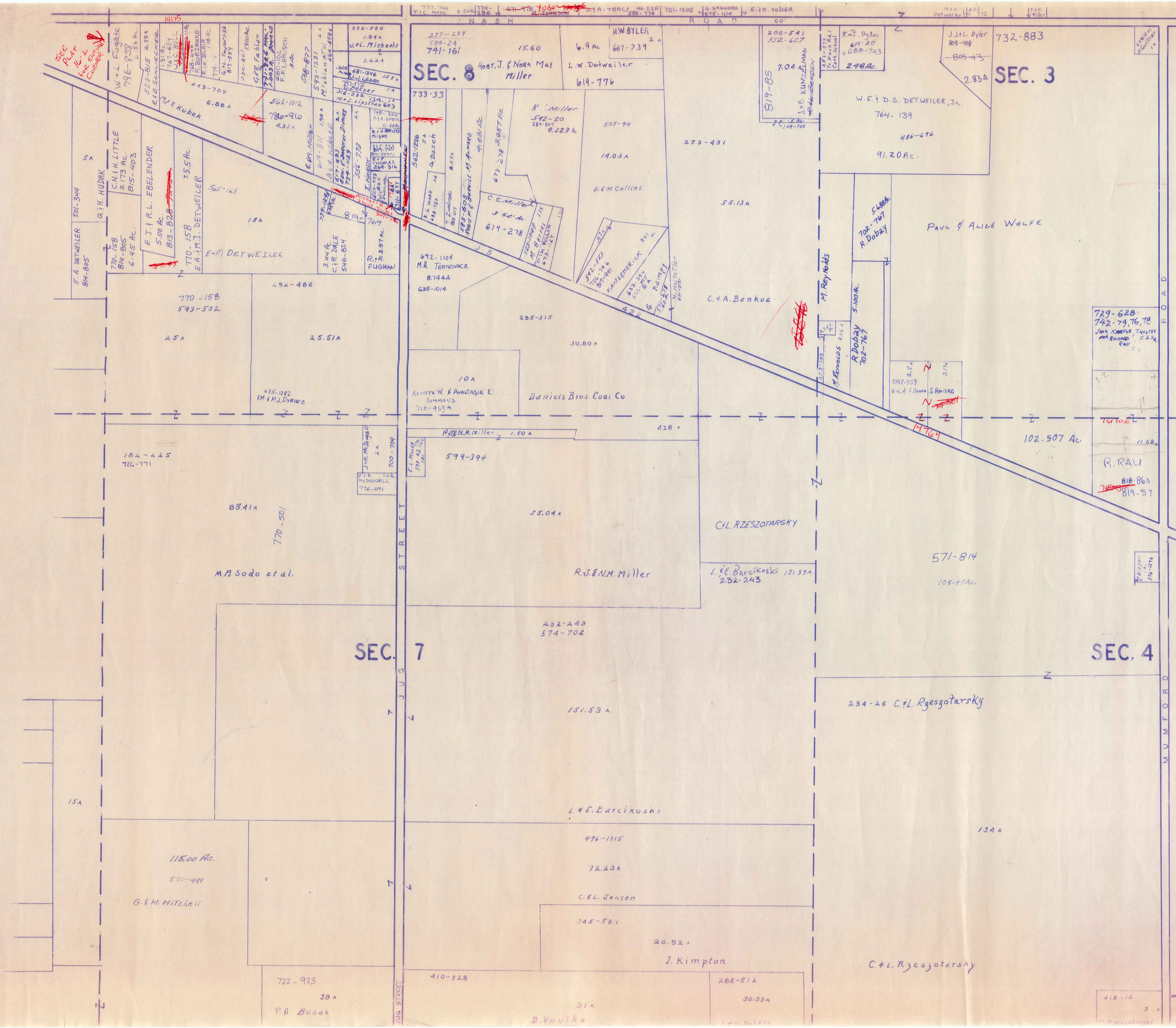
SCALE 1"=300'  
JAN. 1, 1989

A	B	C	D
E	F	G	H
I	J	K	L
M	N	O	P

\* Inadequate Description

TROY TWP  
RELATIVE REPRESENTATION





SEE PLAN FOR EXISTING CONCRETE

SEC. 8  
 237-234  
 599-24  
 741-161  
 15.60  
 6.9 AC  
 667-739  
 H.W. BYLER  
 2 A  
 ROBT. J. & NORA MAE MILLER  
 L.W. Detweiler  
 619-776

SEC. 3  
 732-883  
 805-408  
 -805-43  
 2.83A  
 W.E. & D.S. DETWEILER, JR.  
 764-139  
 486-676  
 91.20 AC.

SEC. 7

SEC. 4

N

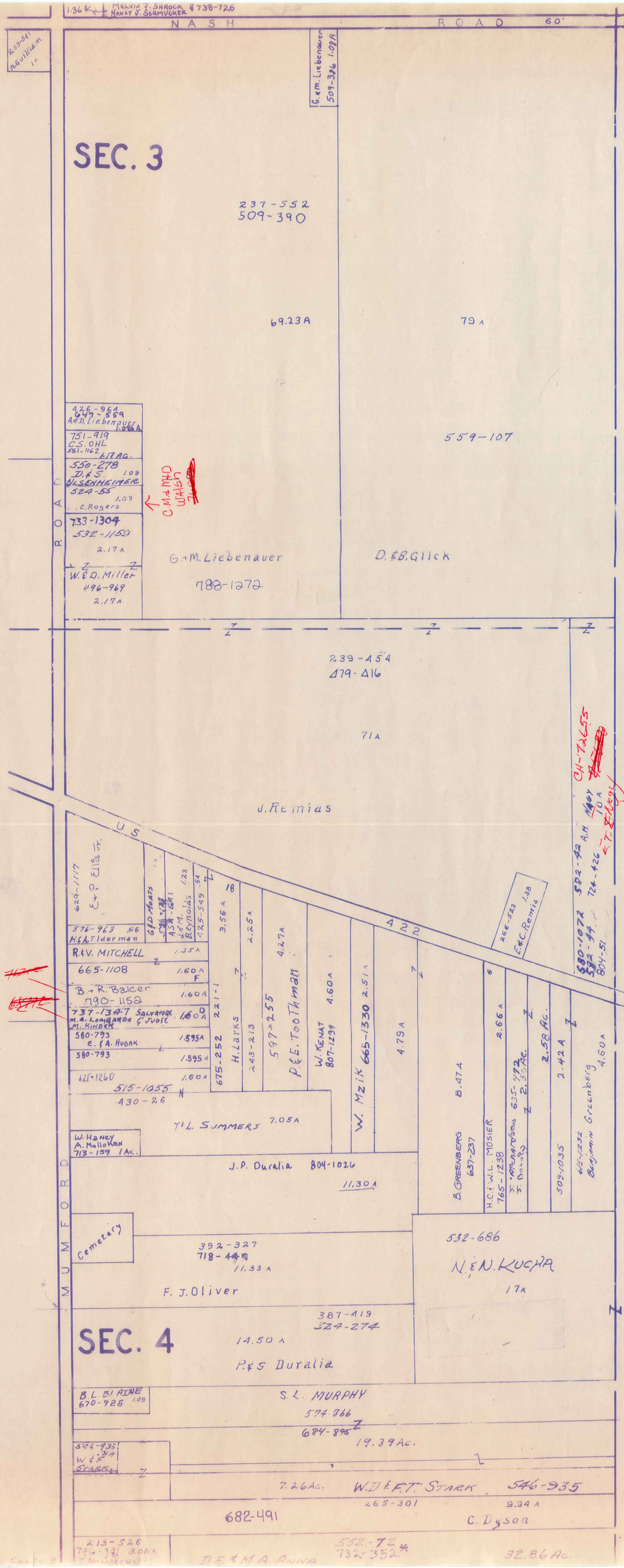
SCALE 1"=300'

JAN. 1, 1989

A	B	C	D
E	F	G	H
I	J	K	L
M	N	O	P

RELATIVE REPRESENTATION  
 \* INADEQUATE DESCRIPTION

TROY TWP



T O W N S H I P  
P A R K M A N



SCALE 1"=300'

JAN. 1, 1989

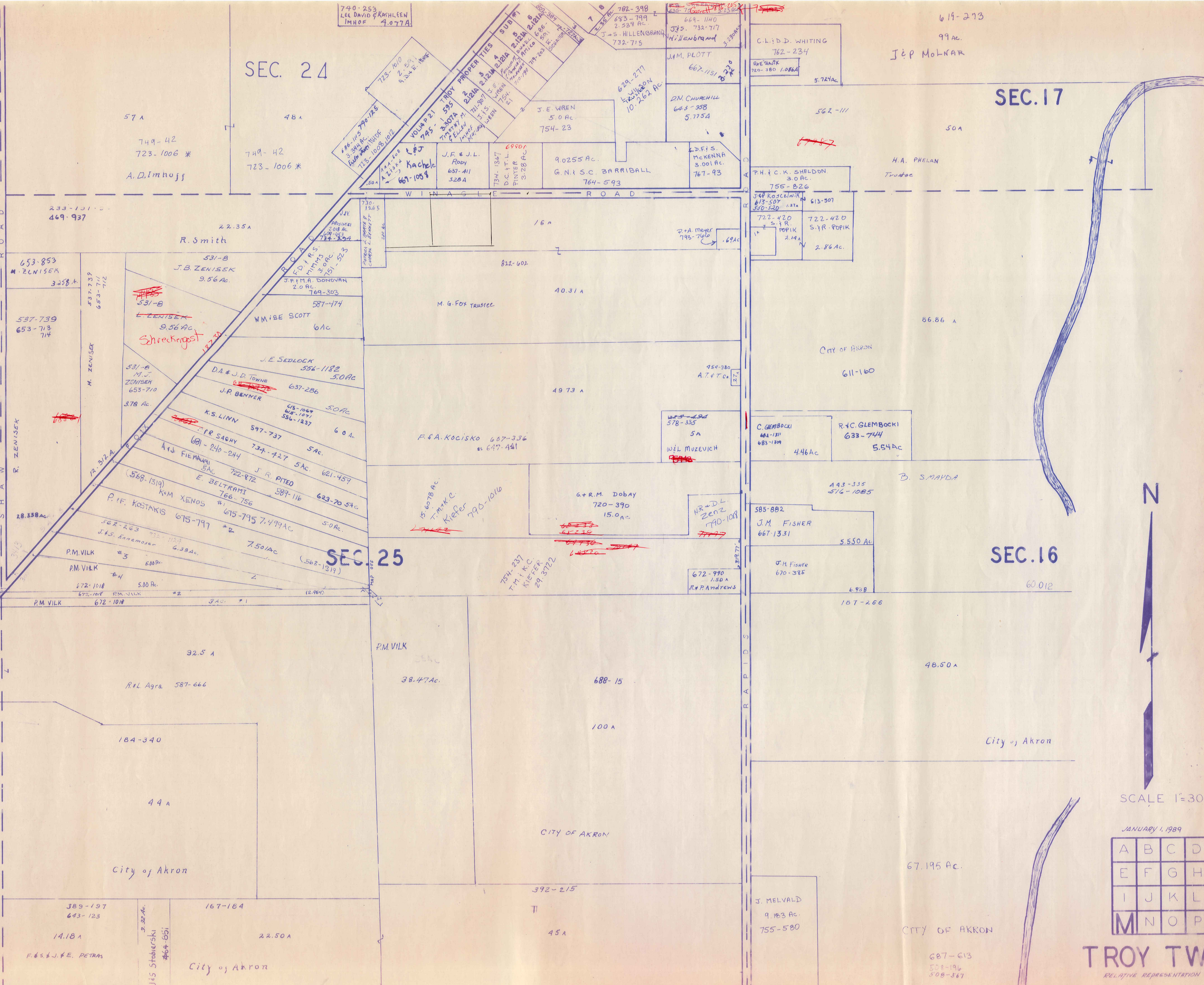
RELATIVE REPRESENTATION

A	B	C	D
E	F	G	H
I	J	K	L
M	N	O	P

\* Inadequate description

TROY TWP

TOWN OF SHAWNEE



SEC. 24

SEC. 17

SEC. 25

SEC. 16

N

SCALE 1"=300'

JANUARY 1, 1989

A	B	C	D
E	F	G	H
I	J	K	L
M	N	O	P

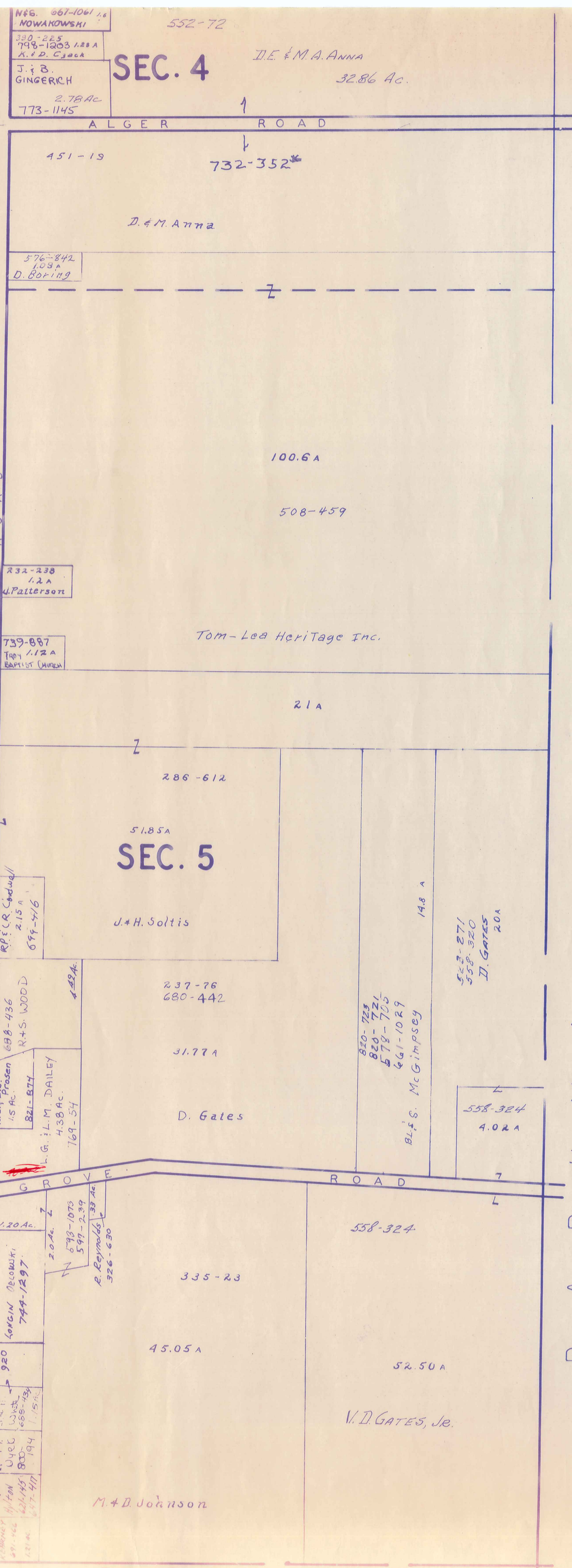
TROY TWP

RELATIVE REPRESENTATION

\*Inadequate Description







N66-067-1061 1/4  
 NOWAKOWSKI  
 552-72  
 749-1903 1/4 A  
 A.P.D. Cjuck  
 J. B. GINGERCH  
 2.78 Ac  
 773-1145

**SEC. 4** D.E. & M.A. ANNA  
 32.86 Ac.

576-842  
 1.03 A  
 D. Boring

432-338  
 1.2 A  
 J. Patterson

739-887  
 1.12 A  
 BARNES (MURDER)

R.F. & C. Candell  
 2.15 A  
 679-516

R. & S. Pruden  
 488-436  
 R. & S. WOOD  
 458A

L. G. J. L.M. DAILEY  
 438A  
 769-517

T75-1096  
 O. PFLEGER

1.20 A  
 Lorian DeCruyck  
 744-1297  
 2.0 Ac  
 878-1073  
 599-239  
 P. Reynolds  
 326-630

R. & M. Uzel  
 830  
 194  
 874-417

M. & D. Johnson



SCALE 1" = 300'

JANUARY 1, 1989  
 RELATIVE REPRESENTATION

A	B	C	D
E	F	G	H
I	J	K	L
M	N	O	<b>P</b>

**TROY TWP.**

\* Inadequate Description

